

DECT
**Comfort
calls**

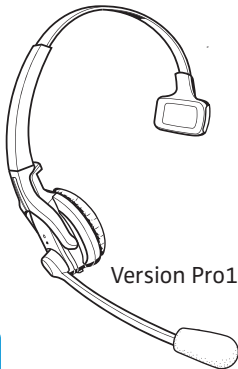
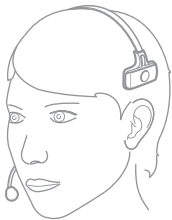


DW Pro1/Pro2

Quick Guide Guide rapide
Kurzanleitung Kort vejledning

 **SENNHEISER**
COMMUNICATIONS

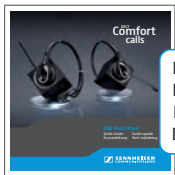
EN Delivery includes
 DE Lieferumfang
 FR Contenu
 DK Leveringsomfang



Version Pro1



Version Pro2



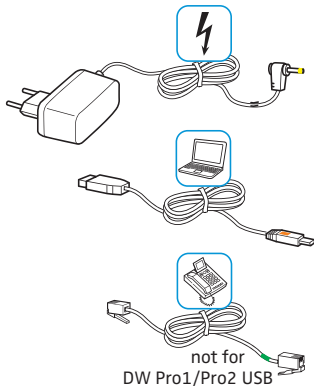
EN
 DE
 FR
 DK



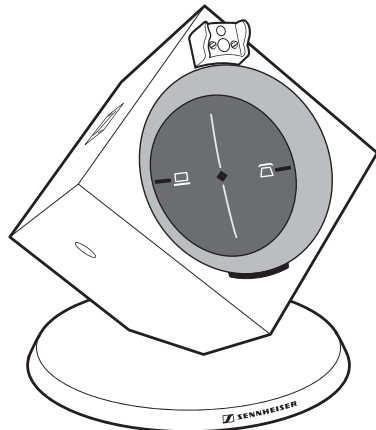
EN SV
 DE NOR
 FR NL
 IT ZH
 ES PL
 PT TR
 DK



EN PT
 DE DK
 FR SV
 IT NOR
 ES NL

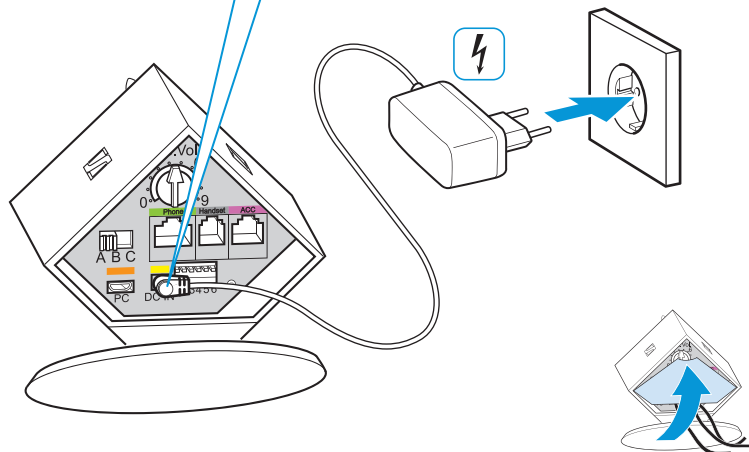
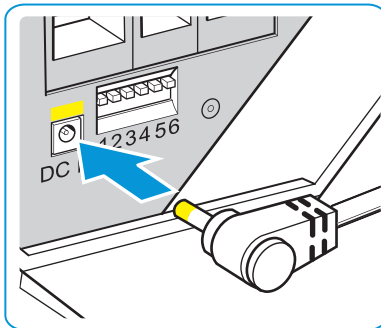


not for
 DW Pro1/Pro2 USB



1

Connecting the base station to the mains power supply
Basisstation mit Stromnetz verbinden
Raccorder la base au secteur
Forbind basisstationen med lysnettet



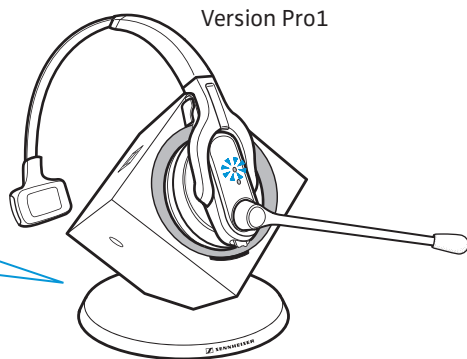
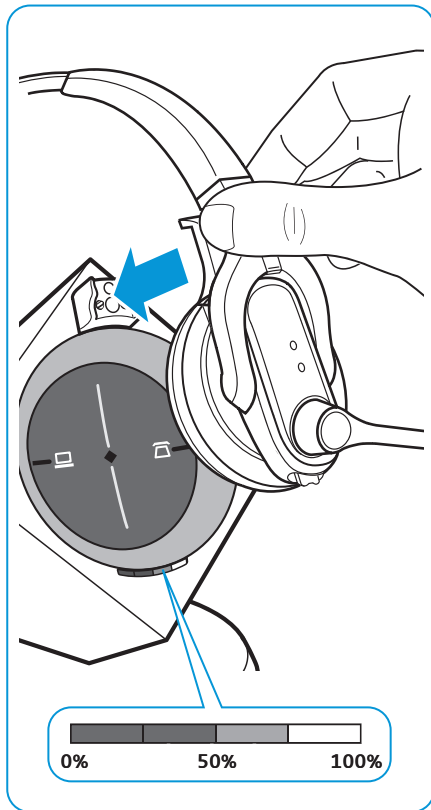
EN
DE
FR
DK

2

Charging the headset
Headset laden
Charger l'oreillette
Lad hovedsættet

50%   20 min

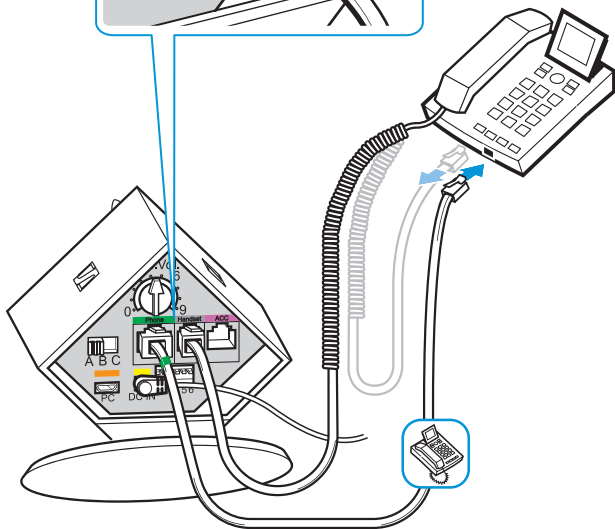
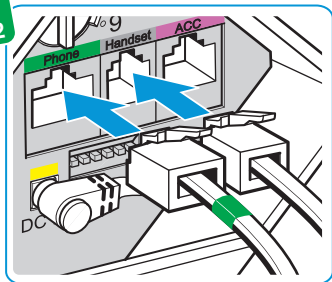
100%   1 h



3

Basisstation mit Festnetztelefon verbinden
Raccorder la base à un téléphone fixe
Forbind basisstationen med fastnettelefon

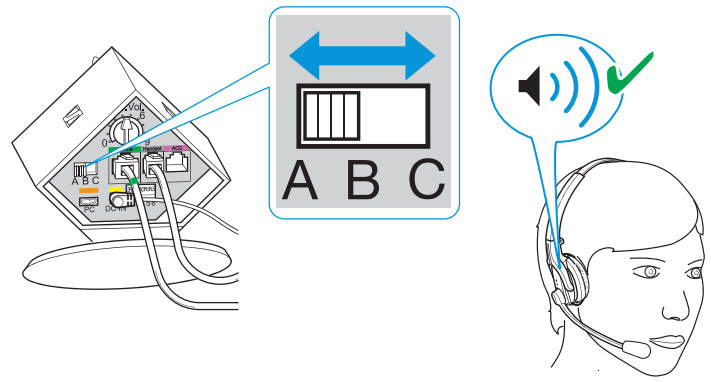
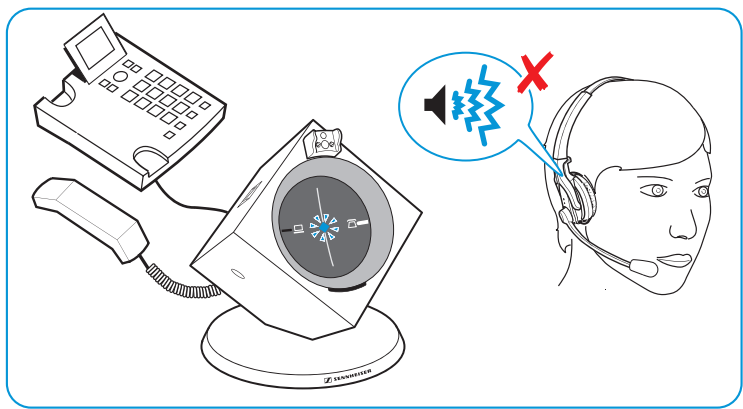
i Only for
DW Pro1/Pro2



PHONE

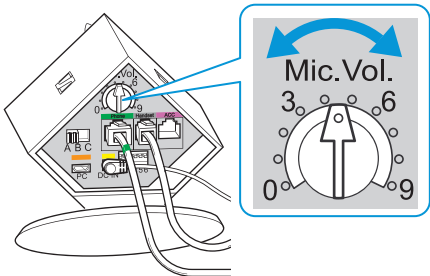
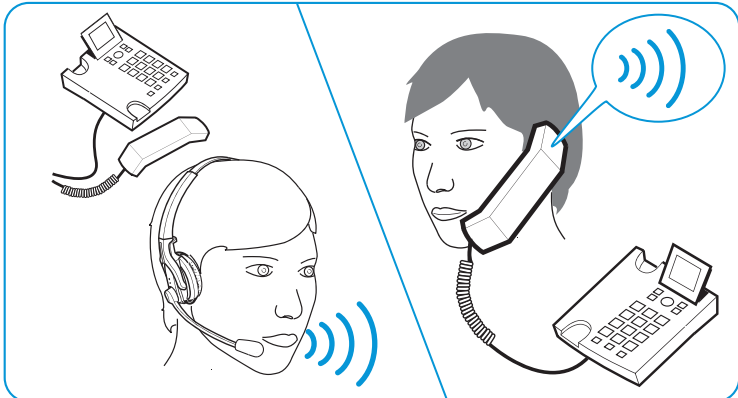
4

Adjusting the dial tone of the telephone
Freizeichen für Telefon einstellen
Régler la tonalité du téléphone
Indstil audiosignalet til telefonen

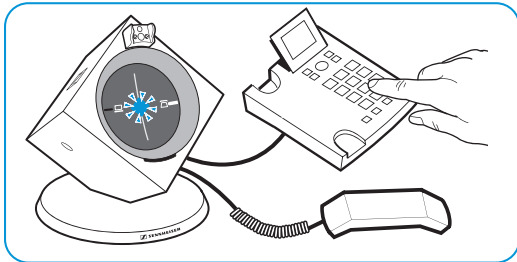
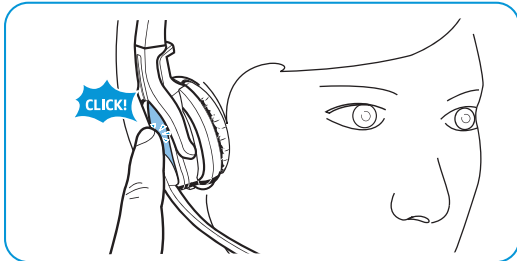
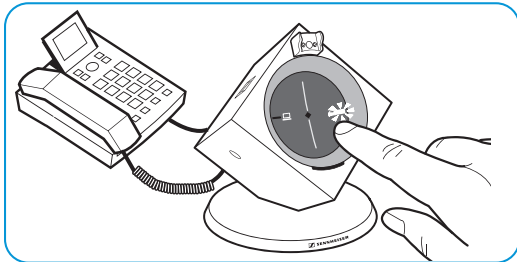


5

Adjusting the microphone sensitivity for outgoing calls
Mikrofonempfindlichkeit für ausgehende Anrufe einstellen
Régler la sensibilité du microphone pour les appels sortants
Indstil mikrofonfølsomheden for udadgående opkald



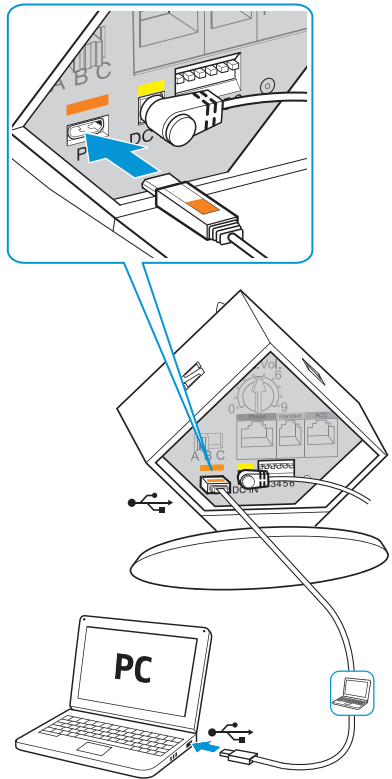
Making calls via the telephone
Telefonieren über Telefon
Téléphoner depuis le téléphone
Telefonér via telefon



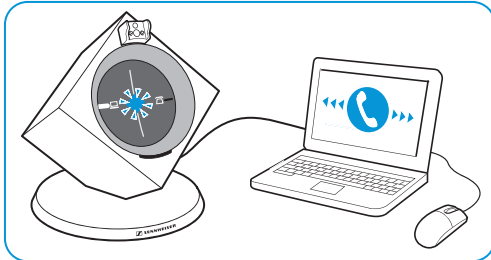
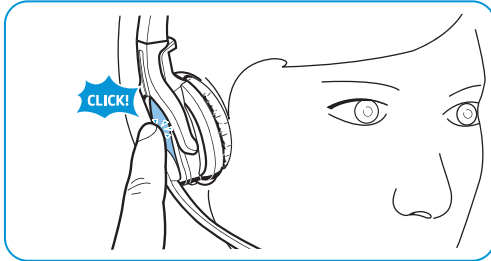
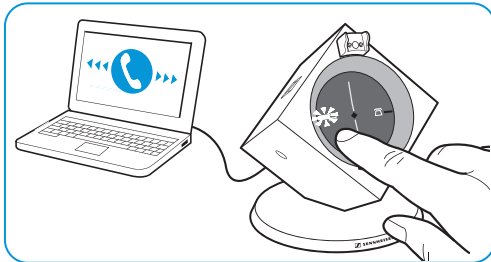
7

Connecting the base station to a PC
Basisstation mit PC verbinden
Raccorder la base à un ordinateur
Forbind basisstationen med pc

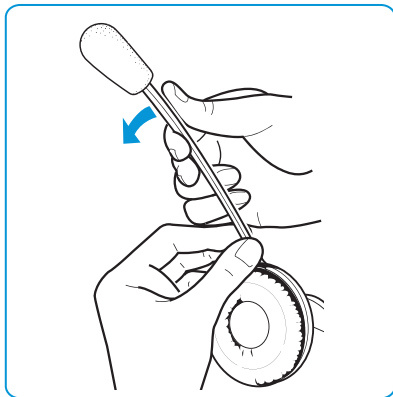
PC



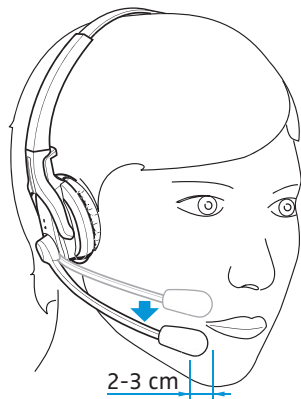
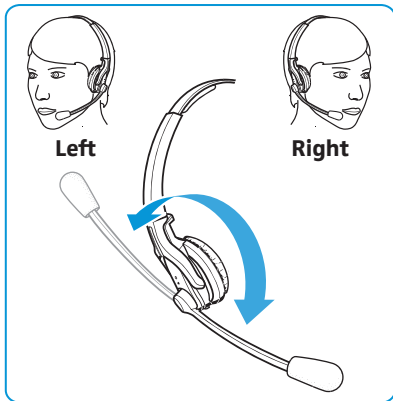
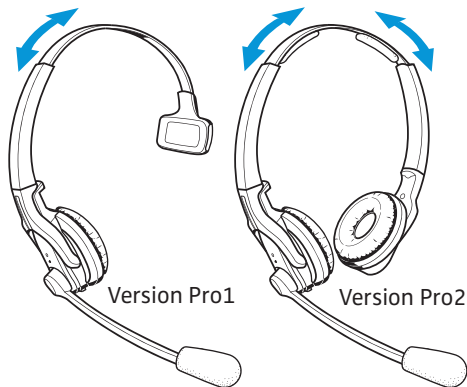
Making calls via the PC
Telefonieren über PC
Téléphoner depuis l'ordinateur
Telefonér via pc



Adjusting the microphone boom
Mikrofonarm anpassen
Régler le bras de micro
Tilpas mikrofonarmen

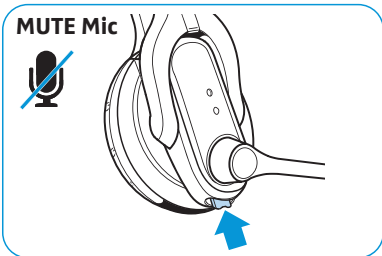
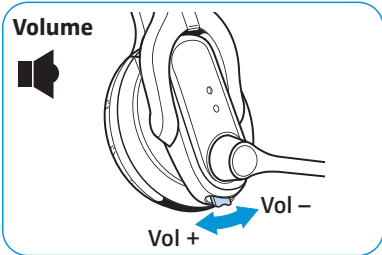
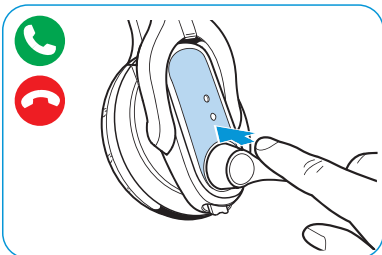


Wearing the headset
Headset aufsetzen
Porter l'oreillette avec l'arceau
Tag hovedsættet med hovedbøjlen på



EN
DE
FR
DK

Using the headset
Headset verwenden
Utiliser le casque-micro
Anvendelse af headset



EN
DE
FR
DK

Labeling the headset
Headset kennzeichnen
Marquage du casque micro
Identificering af hovedsættet

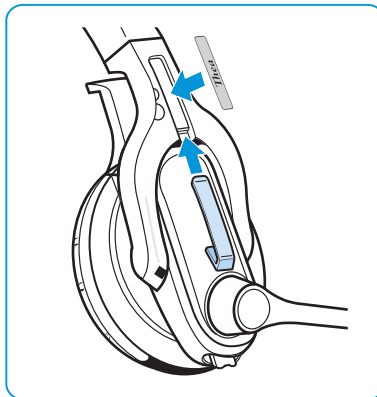
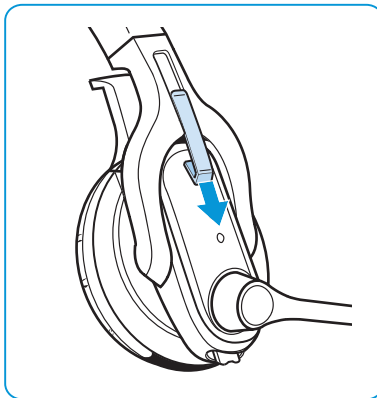


Nameplate-template.pdf

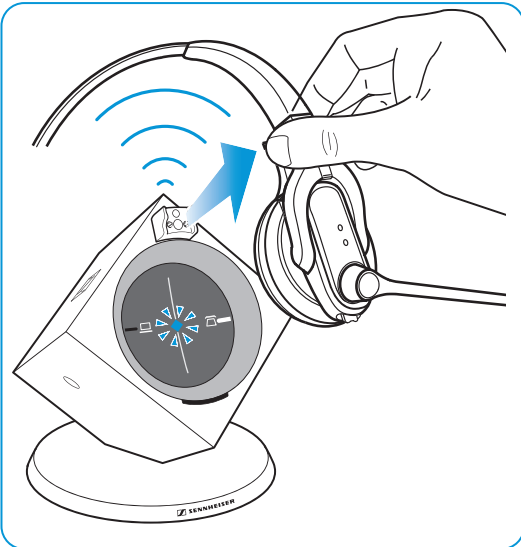
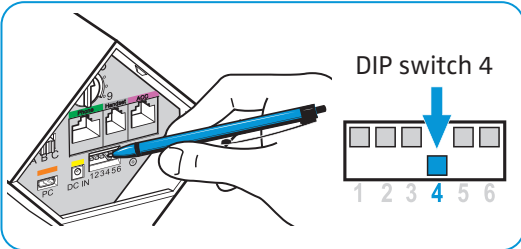
TYPE

PRINT

CUT



Establishing an immediate connection (Auto Link)
Sofortige Verbindung (Auto Link) herstellen
Etablir une connexion immédiate (Auto Link)
Etablér forbindelse (Auto Link) med det samme





www.senncom.com/support



Sennheiser Communications A/S
Langager 6, 2680 Solrød Strand, Denmark
www.senncom.com

Printed in China
Publ. 06/10
A01